

APPFLUENT PRODUCT SUITE

Non-Disruptive Monitoring and Analysis for Intelligent BI & Data Warehouse Management

The Big Picture:

- Reduce fire drills by proactively reviewing usage and performance
- Improve performance by correlating user activity with application activity and data usage
- Discover and reduce complex, expensive query workload
- Develop better data structures based on how tables and columns are used
- Proactively identify end-user generated bottle-necks
- Optimize indexing strategy based on actual usage of data
- Simplify the data footprint based on actual usage
- Strengthen security policies and data governance based on actual data usage information

Escalating support costs. Disgruntled end-users. Data availability and performance issues. Regulatory risk and audit compliance. These are critical challenges faced by BI/ Data Warehousing teams. But these are the symptoms of much larger issues.

Today's BI/ Data Warehousing environment is constantly evolving, with changing workload patterns, growing data volumes, and new users needing support. Managing this environment requires more insight than legacy tools provide.

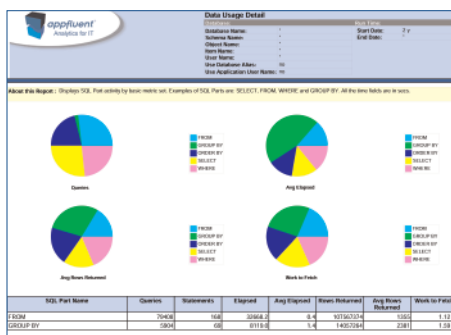
Left with poor visibility and complex collaboration with other internal groups, BI/ Data Warehousing teams are often forced to make 'best guess' assumptions when trying to solve critical business challenges.

Appfluent Product Suite: A Comprehensive Solution for Intelligent BI/ Data Warehouse Management

The Appfluent Product Suite provides comprehensive, critical insight into user activity, applications, and database usage, without disrupting production systems. Appfluent removes the guess-work and ensures BI and IT teams have the information they need to effectively address critical issues. Appfluent provides critical aid to query performance efforts, data consolidation projects, and regulatory/ audit compliance requests.

Visualize, Analyze, and Correlate User Activity, Query Performance, Application Workloads, and Database Utilization.

The Appfluent Product Suite delivers more than 50 pre-packaged reports and ad-hoc reporting via Business Objects, Cognos, and DB2 Alphablox. Appfluent centrally collects and analyzes every query to provide actionable insight for the BI/ DW team and the entire IT organization. Specifically, Appfluent provides answers to the following types of questions:



The Appfluent Product Suite provides more than 50 high-value pre-packaged reports right out of the box.

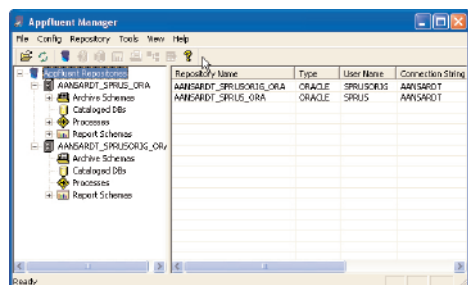
Which applications are creating the biggest performance impact? Who are the most active users running long running queries? Are the users trained to use the data that is available? Should I remove or archive data?

Are the issues because of complex queries – such as excessive Join activity or repeated use of expensive functions and operations?

Do you have the right index coverage?

Which data is involved in expensive Joins/Functions/ Operations and what are the SQL statements? Are those complex operations better suited for ETL transforms?

Which data is dormant or unused? Should I streamline the ETL loads?



The Appfluent Manager provides easy management and administration of the Appfluent Product Suite.

Continuous, Non-Disruptive Monitoring of Your Entire BI/ Data Warehouse Environment

Core to the Appfluent Product Suite is a set of distributed processes that work together to create a non-disruptive process for continuously watching, storing, and analyzing all queries generated by users and applications.

All of these processes load query, application, and database information into Appfluent's Analytical Repository, where the information can be managed (via the Appfluent Manager console) for daily, weekly, monthly and longer term periodic trending and variance analysis.

Take the Next Step

To further explore how Appfluent can help you solve your query performance, data consolidation, and regulatory issues, contact your Appfluent sales representative and arrange a demo of the Appfluent Product Suite. Call 301.770.2888 (outside the US, +44 (20) 7193 3110), or visit <http://www.appfluent.com>



Corporate Headquarters
 Appfluent Technology, Inc.
 6001 Montrose Road, Suite 804
 Rockville MD 20852 USA
 (301) 770-2888
www.appfluent.com

Function	Highlights
Non-Disruptive Watcher	24x7x365 user, application and workload information capture.
Analytical Repository	Central analytical store for IT provides granular analysis over time.
Analysis and Reporting	More than 50 pre-packaged reports included, and an available ad-hoc reporting package.
Reporting Views by Role, Reason, and Schedule	Ensures collaboration between your entire BI/ Data Warehousing and IT team.
Leading Platform Support	Databases: Oracle Databases, Microsoft SQL Server 2000, IBM DB2. Operating Systems: Sun Solaris, Linux, HP-UX, IBM AIX, Microsoft Windows. Business Intelligence Systems: Business Objects, Cognos, and DB2 Alphablox.